



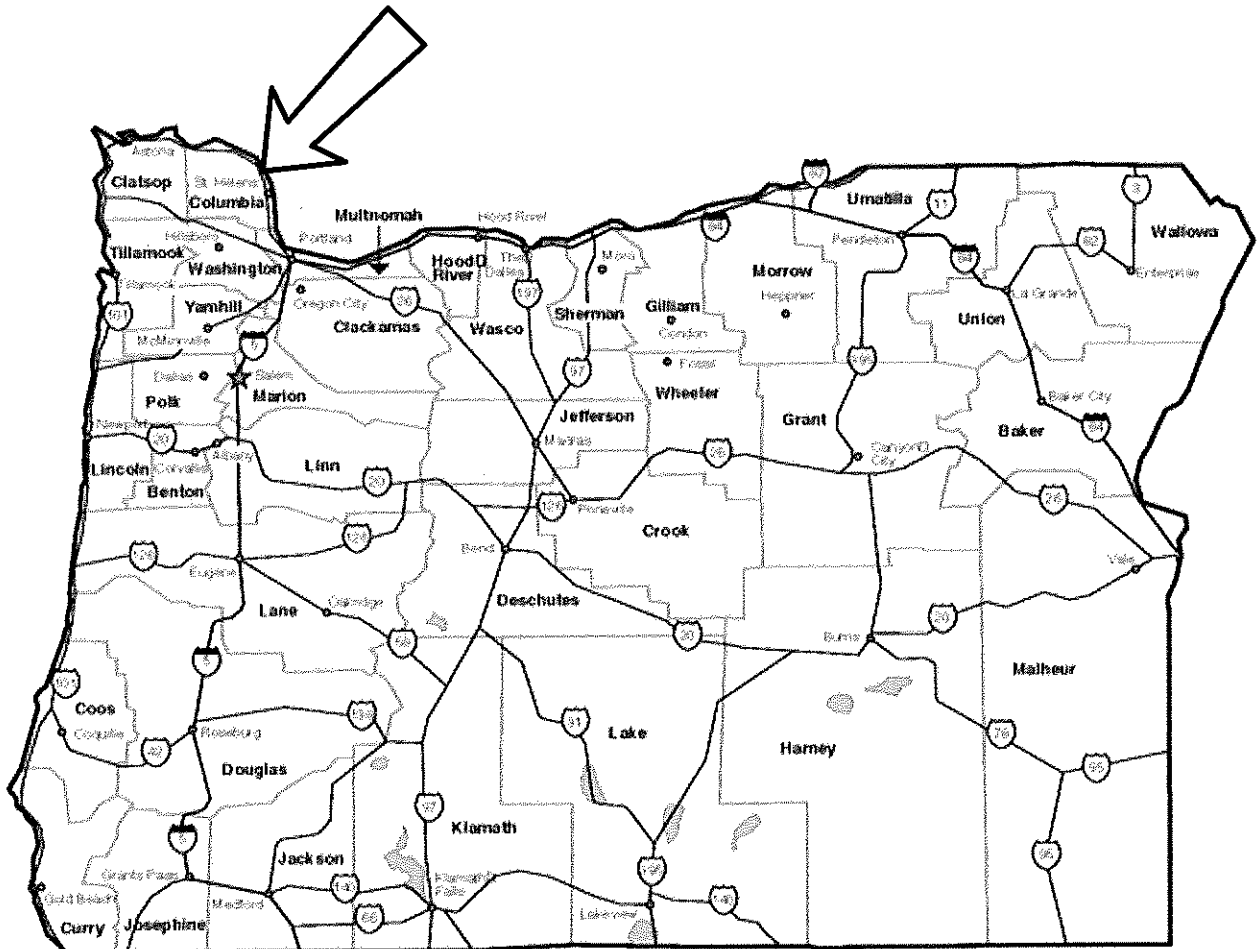
## ***Community Profile***



**City of Columbia City**  
**2021-22 Annual Budget**  
**COMMUNITY PROFILE**

Columbia City is located in Northwest Oregon, along the Columbia River and the Oregon/Washington border, 29 miles north of Portland, 2 miles north of St. Helens, 70 miles southeast of Astoria, and 180 miles south of Seattle.

## Columbia City



**City of Columbia City  
2021-22 Annual Budget**

**COMMUNITY PROFILE**

Columbia City is located in northwestern Oregon on the banks of the Columbia River, approximately 32 miles north of the City of Portland on Highway 30 and 2 miles north of the City of St. Helens and 61 miles east of the Pacific Ocean.



The City is dominated, ecologically and visually, by the Columbia River, which is nearly a mile wide here. Fir-clad slopes provide a backdrop west of town; across the River are the foothills of the Cascade Range. Five snow-covered peaks are visible from the City: Mount St. Helens, Mt. Adams, Mt. Hood, Mt. Rainier, and Mt. Jefferson.

**Population:** The population of the City of Columbia City was estimated to be 1,985 on July 1, 2017, according to Portland State University Population Research Center. Population totals from the 2020 Census will be provided as they become published and available.

**Climate:** Columbia City has a temperate climate with dry, moderately warm summers and wet, mild winters. Average annual precipitation in the County is slightly less than 50 inches. Prevailing winds up and down the Columbia River provide some circulation in local air sheds and assist in dilution of air pollutants. Snow or freezing weather is rare, and 100° F. is seldom reached in the summer.

**History:** Columbia City's location on the bank of the "Mighty Columbia River" made it a link in development of River transportation. The steamboat navigation was started on the Columbia River by the building of the combination sail and steam sidewheel ship "Beaver" launched in 1834 at London, England, for the Columbia and Willamette River traffic by the Hudson Bay Company. On its first voyage up the Columbia River to where it was to be based at Fort Vancouver, it would have gone by the sight that is now Columbia City. All that was here then was an American Indian fishing village, which they called "Cumahi." There is no way to tell how it was spelled for this particular American Indian tribe did not have a written language.

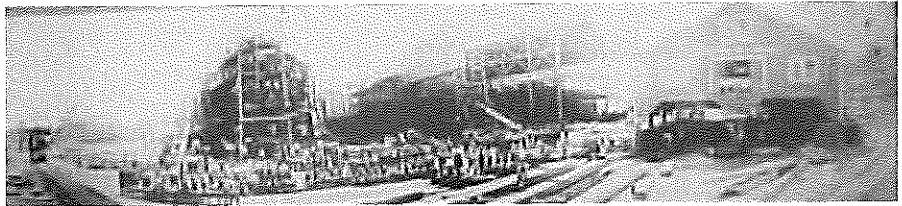
Steam navigation continued to aid in the River development. The Caples Brothers of Columbia City owned and operated the Sternwheeler "Metlako" and ran it on a passenger and freight schedule from Portland to Woodland, Washington, and waypoints. The Graham Brothers owned and operated the Sternwheeler "Ottawa" out of early Columbia City. Later the Caples Brothers owned and operated the steam-powered propeller-driven "Victor." The three-foot diameter four-blade propeller of the "Victor" is now on display at the Caples House Museum.

The McVey house was built in 1871 as a store with a residence on the second story. By 1891

the building was also used as the Post Office. This was the only boat landing in the City, and River traffic stopped to pick up passengers and refuel--many of the River-going vessels burned wood for power. This house is a historic landmark and still stands at 2040 The Strand.

The Caples House was built in 1870 by Doctor Charles Caples, a doctor in the area. The house was presented to the Daughters of the American Revolution (DAR) in 1959 and is open to the public. The facility consists of the Main Museum (which is the original house), the Carriage House (which has been converted into a Costume house and Children's Attic with old dolls and toys), a Country Store, a Pioneer Tool Shed, and the Knapp Social Center (which contains an assembly room, kitchen, library, and caretakers' living quarters).

During World War I the Sommarstrom Brothers built a shipyard with four ways - to build four ships at once - in the south part of Columbia City



where River Club Estates is now located. They hired a large crew and built wood ships for the U.S. Government. When the war ended, the ship contracts were cancelled.



**Government:** The City of Columbia City was incorporated in 1926. The City has a Mayor and four Council Members. The City has a seven-member Planning Commission. The City Hall is located at 1840 Second Street, and the City's Community Hall is located next door at 1850 Second Street. The Public Works office and shops are on the corner of Second Place and "J" Street.

**Commerce and Industry:** The Port of Columbia County owns the only industrial property in the City and has one of the few deep-water docks along the River. The site is also served by the Portland and Western Railroad and the Columbia River Highway. Portions of the site are leased by Clearwater Paper and Forest Energy Oregon.

**Schools:** Students grades K through 6 attend the Columbia City Grade School in Columbia City. Middle school and high schools students attend schools in St. Helens, two miles away.

**Housing:** There are approximately 748 single-family dwelling units, 53 manufactured homes, and 24 duplex units within the City. There are four multiple-family units providing another 16 housing units.

**Communications:** Cable and satellite serviced television is available in Columbia City. There is also a post office located on the corner of Second and "I" Streets. Newspapers are located in nearby St. Helens and Scappoose, and the City publishes a monthly newsletter.



**Recreation:** The geographic location of the City provides a natural environment for the enjoyment of outdoor activities. The Columbia City bike path is very popular year-round, and links to a designated bike path that leads through a scenic, wooded area to the City of St. Helens. The Columbia City Dog Park provides a place for off-leash romping for pets and a social



gathering place for pet owners. Harvard Park features playground equipment, and the Columbia City Grade School also offers a playground for use by the public. Jim Bundy Memorial Park hosts a picnic shelter and wooded areas, and offers a beautiful display of trillium from April through June. The Columbia



City Veterans Park is a popular attraction, and annual Memorial Day ceremonies are held at the site. Carolyn King Park provides spectacular views of the Columbia River and Datis Park is located right on the river. There are also two privately owned parks open to the public with spectacular river views - Pixie Park and Ruth Rose Richardson Park.

The City owns a Community Hall, which can be rented for athletic or social activities. The Caples Museum and Knapp Social Center offer opportunities for entertainment and rental use. The Pacific Athletic Club, a membership organization, provides a weightlifting room, racquetball courts, a swimming pool, sauna, complete aerobics, cardiovascular machines, a basketball court, and classes. The Columbia River offers some of the finest fishing in the State, and many residents are quite active in this outdoor sport. Boating, sailing, and water sports including kite sailing and kite boarding have become increasingly popular for both participants and viewers alike. Many residents consider their view of the River and the River traffic one of the most appealing features of the City. The marinas in the area, as well as County and State parks, provide additional recreational opportunities.

### **Special Events:**

- An annual Memorial Day Ceremony is held in the Columbia City Veterans Park in honor of all American Veterans that serve or have served in the Army, Marine Corps, Navy, Air Force, Coast Guard and Merchant Marine.
- The Columbia City Celebration is an annual September event. The Celebration features a wide range of activities, including the annual Show & Shine Car Show, Prepare Fair, Strawberry Pancake Breakfast, Used Book Sale, Craft Fair, Silent Auction, and more.

- Fleet Day is celebrated in June with the military ships traveling up the Columbia River and past Columbia City on their way to Portland for the annual Rose Festival celebration.
- The City is a good place to watch the Fourth of July fireworks set off from St. Helens.
- The City hosts an annual Strawberry Pancake Breakfast to celebrate the Easter holiday.
- The second Saturday in December brings the arrival of the Christmas ships. Private boats decorated with lights motor by the City for everyone to enjoy.
- The City hosts two annual Michael Allen Harrison benefit concerts - one during the holiday season and one in the spring. Michael is a composer, songwriter and pianist and is known for his magical piano solo performances and recordings. These concerts benefit the Columbia City Community Hall.
- In May, the City hosts an annual Birthday Benefit Dance in honor of and benefiting the Columbia City Community Hall. Activities include live music, an old-fashioned cake auction, 50-50 raffle, food, drinks, centerpiece surprise package auction, and silent auction. The Community Hall was constructed in 1926, and it is a multi-use facility that is available to rent at very affordable rates.

**Transportation:** Columbia County Rider provides general public transportation services.

**Fire and Police Protection:** The Columbia River Fire and Rescue offers fire protection to the City. A Forestry Department office is located in the City near the intersection of Highway 30 and "E" Street. The Police Department is staffed by the Police Operations Sergeant, Police Reserve Sergeant, Police Officers and Reserve Police Officers. The present paid staffing level is 3.01 full-time equivalents. In addition, the City is served by the Columbia County Sheriff's Department and the Oregon State Police.

**Medical Facilities:** Doctors' offices and an urgent care facility are located in nearby St. Helens, two miles away, and the closest hospital is in Longview, Washington; twenty-one miles away.

**Services:** Residents of Columbia City are served by Hudson Garbage Service, and the Columbia River Public Utilities District serves the City with electricity. CenturyLink provides telephone service, Northwest Natural Gas provides gas, Comcast serves the City with cable television, and water and sewer services are provided by the City.

### **Park Descriptions:**

**Carolyn King Park (0.06 acres):** This viewpoint park provides spectacular views of the Columbia River, Mt. St. Helens, and Mt. Adams. The park is located at the corner of Ninth and "K" Streets, and has a covered picnic table.



**Columbia City Bike Path (5.00 acres):** This popular bike path is used by





walkers, bicyclists, joggers, and skaters. It extends along the west side of Highway 30 and then along the top of the bank along McBride Creek.

**Columbia City Elementary School (1.92 acres):** This area is accessible to the public during non-school hours, and includes playground equipment, volleyball area, soccer and softball field, and basketball court. The park may be accessed from

Second, First and "F" Streets.

**Columbia City Veterans Park (0.39 acres):** The Veterans Park currently features a monument honoring all American veterans, five veteran walls displaying engraved bricks, a POW/MIA monument, a monument offering a Tribute to the Family Members of Veterans, a Blue Star Byway Marker, a US flag pole, a POW/MIA flag, six branch flags and monuments (Army, Marine Corps, Navy, Air Force, Coast Guard and Merchant Marine), hand crafted picnic tables and park benches, a drinking fountain with pet dish, a rose garden, and landscaping. The Veterans Park is located along the bike path at the trailhead for the Rivers Walk Trail System.







**Harvard Park (0.39 acres):** This developed neighborhood park is located on Sixth Street between Calvin and Penn Streets. It currently has playground equipment, an open green area for field games, park benches, picnic tables, drinking fountain and a seasonal restroom facility.

**Rivers Walk Trail System (7.86 acres):** The first phase of this trail system is currently under development. Phase 1 includes the development of a picnic area. The trail head will be located near the Veterans Park, next to Highway 30 and McBride Creek. The trail system will lead hikers up and down the banks along the McBride Creek riparian area, which hosts a spectacular display of trillium from April through June.



**Entrance Sign Area (0.33 acres):** The City has partnered with the Oregon Department of Transportation to landscape an area along Highway 30. The site serves as home to a beautiful rose garden and a handcrafted "Welcome to Columbia City" entrance sign that was designed and built by a local artist. A lit flag pole proudly displays the US flag at the site.

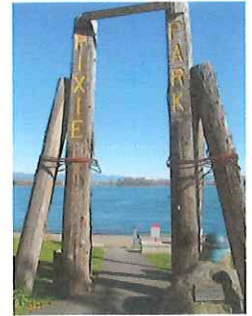


**Columbia City Dog Park (0.84 acres):** The City, in partnership with the Port of Columbia County, provides an off-leash dog park for the public and their pets to enjoy. The fully fenced dog park encompasses  $\frac{1}{2}$  acre of open grassy field divided into two areas - one for large and one for small dogs. The park features a few picnic tables, a park bench, waste stations, double gates, specific rules for dogs and their owners, some shade, and (of course) a fire hydrant. Dog owners should bring their own water for their dogs.



**Jim Bundy Memorial Park (2.86 acres):** This park is located at the corner of "E" Street and Highway 30, adjacent to the Columbia City Bike Path. This centrally located park is heavily wooded and easily accessible to travelers. It features a beautiful display of trillium from April through June. The park has a picnic shelter, picnic tables, park benches, walking trails, and restroom facility.

**Pixie Park (0.31 acres):** This waterfront park is privately owned by the Daughters of the American Revolution (DAR). This park is located at the corner of The Strand and "I" Street. This is a popular park for picnics and it provides breathtaking views of Columbia River, Mt. Adams, Mt. Hood, and river traffic and activities. It has a well maintained grassy area for lounging and picnics, picnic tables, and access to the river. The site is a popular location for wind surfing and wind sailing activities.



**Ruth Rose Richardson Memorial Park (0.46 acres):** This private park is also owned by the DAR and is located on "I" Street between First Street and The Strand. This park provides a grassy area for picnics, and benches with spectacular views of the Columbia River, Mt. Adams, and river traffic and activities.

**Datis Park (0.14 acres):** This waterfront park is located on The Strand and provides a scenic view of the river activity. The Parks Committee plans to add a fishing dock.





**City of Columbia City  
2021-22 Annual Budget**

**COMMUNITY PROFILE DETAIL**

**LOCATION:**

Northwest Oregon, along the Columbia River and the Oregon/Washington border, 29 miles north of Portland, 2 miles north of St. Helens, 70 miles southeast of Astoria, 180 miles south of Seattle.

**Incorporated:** June 7, 1926

**City Charter Adopted:** July 1, 2014

POPULATION INCREASE	
Year	Percent
2010-2019	2.00%
2000-2010	22.01%
1990-2000	59.02%
1980-1990	47.50%
1970-1980	26.63%
1960-1970	26.95%
1950-1960	4.44%
1940-1950	23.85%

AGE COMPOSITION				
Age in Years	2010		2019	
	Persons	Percentage	Persons	Percentage
Under 5	87	5%	73	4%
5-19	311	16%	292	15%
20-44	489	25%	518	26%
45-64	700	36%	765	39%
65+	359	18%	337	16%

POPULATION	
Year	Number
2017 - Present	1,985
2016	1,965
2015	1,955
2014	1,945
2013	1,945
2012	1,950
2011	1,950
2010 Official Census	1,946
2009	1,990
2008	1,975
2007	1,955
2006	1,890
2005	1,785
2004	1,760
2003	1,720
2002	1,650
2001	1,620
2000 Official Census	1,595
1999	1,665
1998	1,635
1997	1,550
1996	1,465
1995	1,385
1994	1,240
1993	1,120
1992	1,070
1991	1,045
1990 Official Census	1,003
1980 Official Census	680
1970	537
1960	423
1950	405
1940	327



HOUSEHOLD INCOME			
Median Income	Columbia City	Columbia County	State
2019	\$78,222	\$62,257	\$67,058
2017	\$68,337	\$57,449	\$60,212
2012	\$66,094	\$55,358	\$50,036
2009	\$63,036	N/A	\$49,033
1999	\$59,545	\$45,797	\$40,916

TAXES	
Sales Tax	None
Property Tax Rate per \$1,000 value	\$15.3485

POLICE PROTECTION	
Number of Employees (Sworn)	3
Number of Reserves (Sworn)	3

RECREATION AND CULTURE	
Parks	18.64 acres
Number of Museums	1
Number of Libraries	1

CITY ELECTIONS	
Registered Voters	1,641
Votes in Last General Election	1,407
Percentage Voting in Last General Election	71%

CLIMATE	
Measurement Location	St. Helens
Elevation	24'
Temperature	
Lowest Monthly Average	32° F
Highest Monthly Average	81° F
Hottest Month	August
Coldest Month	January
Driest Month	July
Wettest Month	December
Precipitation	
Average Annual Precipitation	42.76'
Humidity Data	
Average - July Afternoon	62%
Average - January Afternoon	82%

